



INTERNATIONAL
MEETING

of the Society for Social Choice
and Welfare

21-24 July 2010, Moscow, Russia

The University - Higher School of Economics

Program





Organizers



NATIONAL RESEARCH
UNIVERSITY

Partner



Dear friends and colleagues,

On July 21-24, 2010 we join in Moscow the X Meeting of the Society for Social Choice and Welfare, which is organized by the National Research University Higher School of Economics.

I would like to remind you the words by Antoine de Saint-Exupery

«... what constitutes the dignity of a craft is that it creates a fellowship, that it binds men together and fashions for them a common language.» (Antoine de Saint-Exupery, « Wind, Sand, and Stars, Harcourt Brace Javanovich, New York, 1967).

Our studies are a sort of a craft and it binds us together, this time in Moscow, we have common language, and I wish all of us success in our activity on the Meeting.

Program Committee Chairman

A handwritten signature in blue ink, consisting of stylized initials and a surname, with a long, sweeping horizontal line extending to the right.

Professor **Fuad Aleskerov**

E-mail: alesk@hse.ru

About HSE

The Higher School of Economics (HSE), Moscow, Russia, was established in 1992 on the initiative of renowned Russian economists (Evgeny Yasin, Yaroslav Kuzminov) and leading reformists from the Russian Government (Yegor Gaidar, Alexander Shokhin, and others) with the purpose to promote economic and social reforms in Russia through education of a new generation of researchers and practitioners, production and dissemination of modern economic knowledge among Russian business and government, as well as giving rise to new ideas for economic and social reforms and formation of new corporate strategies. The HSE is a new-type university project, conceived by professional community with support of the Russian state and business.

In 1995 the HSE was awarded university status. In cooperation with leading European universities, such as Erasmus University Rotterdam, the University Paris I Pantheon-Sorbonne, and the London School of Economics and Political Science, it established itself as a leading university in Russia in the field of economics, social and political sciences. The HSE is ranked among the top-three most popular and prestigious universities in Russia (MSU – MGIMO – HSE).

In 2003 the HSE became a member of the European University Association (EUA) and joined the Institutional Management in Higher Education (IMHE) programme of the Organization for Economic Cooperation and Development (OECD). The university actively participates in the EUA and IMHE projects, aimed at enhancing the quality of university programmes, research and governance. In 2004 it carried out an Internationalization Quality Review and started working in the Quality Culture network on research management.

Currently, the HSE is a multi-discipline centre of study and research, which has been developing mutually beneficial partner relations. The HSE enjoys effective partnership relations with renowned foreign universities, international programmes and organisations, research consortia and scientific periodicals/editions, foreign companies and transnational corporations (over 130). Among them, there are 40 foreign partners from 13 countries of Europe, North America, and South and Southeast Asia, who have signed the Cooperation Agreements by 2007.

Among recent international networking initiatives, there are the HSE's role as the Russian coordinator of the TEMPUS SCM project TUNING Educational Programmes in Russian HEIs (Tuning-Russia) and its partnership in the Erasmus Mundus External Cooperation Window project targeted at implementation of mobility schemes in the academic year 2008-2009.

One of the characteristic features of our constantly growing university is the increasing number of departments and schools, set up in response to the labour market demand for particular fields of expertise and a need for highly skilled professionals. By the 2007-2008 academic year, the University consisted of eighteen departments and schools. Teaching of economics is integral to the curricula of the HSE departments, as well as a strong commitment to equip future professionals with general analytical competencies and an in-depth knowledge of foreign languages. The quality of teaching, exposure to real life problems of the Russian economy and understanding of international dimensions of business and politics ensure the HSE graduates' access to top commercial enterprises, government bodies and international organizations of the Russian and international labour markets.

Committees



Program Committee

1. Fuad Aleskerov (Higher School of Economics, Russia) – Chairman
2. Anna Bogomolnaia (Rice University, USA)
3. John Duggan (Rochester University, USA)
4. Ulle Endriss (University of Amsterdam, The Netherlands)
5. Bettina Klaus (Maastricht University, The Netherlands)
6. Michel Le Breton (University Toulouse I, France)
7. Christian List (LSE, UK)
8. Jordi Masso (Universitat Autònoma de Barcelona, Spain)
9. Vincent Merlin (Caen University, France)
10. Klaus Nehring (UC Davis, USA)
11. Dmitry Novikov (Institute of Control Sciences, Russia)
12. Szilvia Papai (Concordia University, Canada)
13. John Roemer (Yale University, USA)
14. Remzi Sanver (Istanbul Bilgi University, Turkey)
15. Konstantin Sonin (New Economic School, Russia)
16. Maria Yudkevich (Higher School of Economics, Russia)
17. John Weymark (Vanderbilt University, USA)
18. Katri Sieberg (University of Tampere, Finland)

Organizers:

University Higher School of Economics

Representatives of the Organizing Committee:

If you need help, you have questions, please call

Ekaterina Angelova +7 916 600 23 83

Andrey Subochev +7 926 336 07 60

Daniel Karabekyan +7 905 506 37 77

Brief Program

**The University –
Higher School
of Economics**

Cultural Centre
Vorontsovo Polye, 5A

Buildings «Г», «Е»
Pokrovsky
Boulevard, 11

July 20th, Tuesday

18.00-22.00 Preliminary registration Cultural Center, Entrance Lobby

July 21st, Wednesday

08.30-09.30 Registration Cultural Center, Entrance Lobby
09.30-09.40 Opening Cultural Center, Great Conference Hall
09.40-11.00 Presidential Address Cultural Center, Great Conference Hall
11.00-11.30 Coffee-break Building «Г», Г-601
11.30-13.30 Morning Session (-01) Building «Г», floors 5-6
13.30-15.00 Lunch Cafe and restaurants outside, Building «Г»
15.00-17.00 Afternoon Session (-02) Building «Г», floors 5-6
18.00-23.00 Moscow-river trip Buses will be provided

July 22nd, Thursday

08.00-08.30 Registration Building «Е», Entrance Lobby
08.30-10.00 Morning Session I (-03) Building «Г», floors 5-6
10.00-10.30 Coffee-break Building «Г», Г-601
10.30-12.30 Morning Session II (-04) Building «Г», floors 5-6
12.30-14.00 Lunch/Council Meeting Cafe and restaurants outside, building «Г»
14.00-15.30 Condorcet Lecture Cultural Center, Great Conference Hall
15.30-16.00 Coffee-break Building «Г», Г-601
16.00-18.00 Afternoon Session (-05) Building «Г», floors 5-6

July 23rd, Friday

08.00-08.30 Registration Building «Е», Entrance Lobby
08.30-10.00 Arrow Lecture Cultural Center, Great Conference Hall
10.00-10.30 Coffee-break Building «Г», Г-601
10.30-12.30 Morning Session (-06) Building «Г», floors 5-6
12.30-14.00 Lunch/Editorial Meeting Cafe and restaurants outside, building «Г»
14.00-16.00 Afternoon Session I (-07) Building «Г», floors 5-6
16.00-16.30 Coffee-break Building «Г», Г-601
16.30-18.00 Afternoon Session II (-08) Building «Г», floors 5-6

July 24th, Saturday

08.00-08.30 Registration Building «Е», Entrance Lobby
08.30-10.00 SCW Prize Lecture & SSCW Meeting Cultural Center, Great Conference Hall
10.00-10.30 Coffee-break Building «Г», Г-601
10.30-12.00 Morning Session (-09) Building «Г», floors 5-6
12.30-13.30 Lunch Cafe and restaurants outside, building «Г»
13.30-15.00 Afternoon Session I (-10) Building «Г», floors 5-6
15.00-15.30 Coffee-break Building «Г», Г-601
15.30-17.00 Afternoon Session II (-11) Building «Г», floors 5-6
18.00-23.00 Gala Dinner Russian Historical Museum

Contacts and useful information

Registration and payment of conference fees:

July 20th, Tuesday	18.00-22.00	Cultural Center, Entrance Lobby
July 21st, Wednesday	08.30-11.00 11.15-15.30	Cultural Center, Entrance Lobby Building «E», Entrance Lobby
July 22nd, Thursday	08.00-13.00 13.15-15.15 15.30-17.30	Building «E», Entrance Lobby Cultural Center, Entrance Lobby Building «E», Entrance Lobby
July 23rd, Friday	08.00-10.00 10.15-17.15	Cultural Center, Entrance Lobby Building «E», Entrance Lobby
July 24th, Saturday	08.00-10.00 10.15-15.15	Cultural Center, Entrance Lobby Building «E», Entrance Lobby

Organizing Committee:

Building «Г», room Г-509.

First-aid Station:

Building «Г», room Г-507.

Internet:

Building «Г», room Г-603.

Assistance:

HSE students in blue T-shirts with the HSE mascot (a crow) on a sleeve will guide you to the Conference events in the HSE Cultural Centre and buildings «Г» and «E»

Section program

Pokrovsky Boulevard, 11

Section A: «Aggregation»

21 July 2010
11:30 – 13:30

Room: Г-510

Session A-01

«Aggregation 1»

Chairperson – **C. Calsamiglia** (Universitat Autònoma de Barcelona)

V. Merlin (CNRS and University of Caen),
M. Diss, F. Valognes (University of Caen)

On the Condorcet Efficiency of Approval Voting and Extended Scoring Rules for Three Alternatives

T. Adachi (Waseda University)

Non-interference and social welfare orderings satisfying strong Pareto and anonymity

D. Mishra, A. Sen (Indian Statistical Institute)

Roberts' Theorem with Neutrality: A Social Welfare Ordering Approach

C. Calsamiglia (Universitat Autònoma de Barcelona), **J. Franke** (Dortmund University),
P. Rey-Biel (Universitat Autònoma de Barcelona)

The incentive Effects of Affirmative Action in a Real Effort Tournament

21 July 2010
15:00 – 17:00

Room: Г-510

Session A-02

«Aggregation 2»

Chairperson – **R. Deb** (Southern Methodist University)

C. Duddy, A. Piggins (National University of Ireland)
Aggregating subsets

F. Aleskerov, V. Chistyakov, V. Kalyagin (State University Higher School of Economics)
The threshold aggregation

U. Grandi (Institute for Logic, Language and Computation, University of Amsterdam),
U. Endriss (ILLC)

Lifting Rationality Assumptions in Binary Aggregation

R. Deb (Southern Methodist University)
Non-binary Social Choice

22 July 2010
08:30 – 10:00

Room: Γ-510

Session A-03

«Aggregation 3»

Chairperson – **X. Mora** (Universitat Autònoma de Barcelona)

M. Gomez-Rua,

G. Bergantiños (Universidade de Vigo)

An axiomatic approach in minimum cost spanning tree problems with groups

L. Lorenzo, G. Bergantiños, (Universidade de Vigo),

S. LorenzoFreire (Universidade da Coruña)

Generalized obligation rules for minimum cost spanning tree problems

X. Mora (Universitat Autònoma de Barcelona),

R. Camps, L. Saumell (Univ. Autònoma de Barcelona)

A continuous rating method for preferential voting

22 July 2010
10:30 – 12:30

Room: Γ-510

Session A-04

«Aggregation 4»

Chairperson – **R. Sanver** (Istanbul Bilgi University)

T. Storcken (Maastricht University)

Weak Independence of Irrelevant Alternatives

A. Laruelle (University of the Basque Country and IKERBASQUE),

F. Valenciano (University of the Basque Country)

Quaternary dichotomous voting rules

J. Lainé (Murat Sertel Center for Advanced Economic Studies, Istanbul Bilgi University),

G. Laffond (CNAM)

Triple-consistent Social Choice and the Majority Rule

R. Sanver, C. Coban (Istanbul Bilgi University)

Social Choice without the Pareto Principle under Weak Independence

23 July 2010
10:30 – 12:30

Room: Γ-510

Session A-06

«Aggregation 5»

Chairperson – **S. Koray** (Bilkent University)

P. Amoros (Universidad de Malaga)
Picking the winners

P. Perez-Asurmendi (Universidad Rey Juan Carlos), **J. Garcia-Lapresta**, **B. Llamazares** (Universidad Valladolid)
Avoiding cycles in majorities based on difference of support

A. Brevern (Institute of Control Sciences)
Binary preference aggregation rules and systems of the vetoes

S. Koray (Bilkent University), **E. Gurer** (University of Houston), **A. Kavruk** (Bilkent University)
Do Impossibility Results Survive in Historically Standard Domains?

24 July 2010
10:30 – 12:00

Room: Γ-510

Session A-09

«Aggregation 6»

Chairperson – **H. Moulin** (Rice University)

A. Nichifor (Maastricht University), **L. Kóczy** (Budapest Tech), **M. Strobel** (Maastricht University)
A Note on a Common Bias in the Methods for Ranking Academic Journals

S. Gordon (Université de Montréal and CIREQ), **T. Bar**
Optimal R&D Project Selection Mechanisms

H. Moulin (Rice University)
Impartial peer evaluation

24 July 2010
15:30 – 17:00

Room: Γ-510

Session A-11

«Aggregation 7»

Chairperson – **S. Ghosh** (Gokhale Institute of Politics and Economics)

M. Martinez-Panero, **J. Garcia-Lapresta**, **B. Llamazares** (Universidad de Valladolid)
A Social Choice analysis of the Borda rule in a general linguistic framework

T. Pena, **B. Llamazares** (Universidad de Valladolid)
Positional voting systems generated by monotonic functions

S. Ghosh (Gokhale Institute of Politics and Economics)
How to Reflect Social Choice in a Better Way? The Role of Indexing under Plurality Rule

Section B: «Inequality and Poverty»

21 July 2010
11:30 – 13:30

Room: Γ-604

Session B-01

«Inequality and Poverty 1»

Chairperson – **L. Bellani** (Bocconi University)

B. Zheng (University of Colorado Denver), **P. Lambert** (University of Oregon)
Consistent Measurement of Achievement and Shortfall Inequality

J. Garcia-Lapresta (Universidad de Valladolid), **C. Lasso de la Vega** (Universidad del Pais Vasco), **R. A. Marques Pereira** (Universita degli Studi di Trento), **A. Urrutia** (Universidad del Pais Vasco)

A class of poverty measures induced by the dual decomposition of aggregation functions

P. Moyes (Groupe de Recherche en Économie d'Aix-Marseille),

U. Ebert (University of Oldenburg)

Talents, Preferences and Inequality of Well-Being

L. Bellani (Bocconi University)

Weights in multidimensional indices of deprivation: Should reference groups matter?

22 July 2010
08:30 – 10:00

Room: Γ-604

Session B-03

«Inequality and Poverty 2»

Chairperson – **N. Pestel** (Institute for the Study of Labor)

F. Maniquet (Université Catholique de Louvain)

Multidimensional poverty measurement: Should we take preferences into account?

K. Bosmans (Maastricht University), **L. Lauwers**, **E. Ooghe** (Katholieke Universiteit Leuven)

Poverty rankings with cardinal and ordinal attributes

N. Pestel (Institute for the Study of Labor), **A. Peichl** (IZA)

Multidimensional Measurement of Richness and the Role of Income and Wealth

22 July 2010
10:30 – 12:30

Room: Γ-604

Session B-04

«Inequality and Poverty 3»

Chairperson – **P. Brunori** (University of Bari and CORE)

R. Velez (Texas A&M University)
Are incentives against justice?

E. Kogay (Kursk State University)
Social well-being of the central Russia region's population

P. Luongo (University of Bari), **P. Brunori** (University of Bari and CORE)
Fairness in Skill Acquisition

23 July 2010
16:30 – 18:00

Room: Γ-609

Session B-08

«Inequality and Poverty 4»

Chairperson – **D. Van de Gaer** (Ghent University)

C. Herrero (Universidad de Alicante), **R. Martinez** (Brown University and University of Malaga)
A. Villar (Pablo de Olavide University)
Multidimensional Social Evaluation: An Application to the Measurement of Human Development

S. Seth (Vanderbilt University), **J. Foster** (George Washington University),
M. McGillivray (Australian Agency for International Development (AusAID))
Rank Robustness of Composite Indices: Dominance and Ambiguity

D. Van de Gaer (Ghent University), **T. Demuynck**(CES, KULeuven)
Rank Dependent Relative Mobility Measures

24 July 2010
10:30 – 12:00

Room: Γ-604

Session B-09

«Inequality and Poverty 5»

Chairperson – **C. Gigliarano** (Marche Polytechnic University)

N. Hassoun (Carnegie Mellon University), **S. Subramanian** (Madras Institute of Economics)
Variable population poverty comparisons: a summary statement of some tendencies in the literature

Y. Leonova (Pacific National University)
The role of industrial clusters in poverty reduction and growth prospects: present experiences and further developments

C. Gigliarano (Marche Polytechnic University),
L. Ceriani (Bocconi University)
An Inter-temporal Relative Deprivation Index

24 July 2010
13:30 – 15:00

Room: Γ-510

Session B-10

«Inequality and Poverty 6»

Chairperson – **S. Seth** (Vanderbilt University – Oxford Poverty and Human Development Initiative, University of Oxford)

C. D'Ambrosio (Universita' di Milano-Bicocca and DIW Berlin), **S. Chakravarty**
An Axiomatic Approach to the Measurement of Poverty Reduction Failure

S. Alkire (Oxford Poverty & Human Development Initiative (OPHI) University of Oxford),
J. Foster (George Washington University)
Poverty and Freedom of choice

S. Seth (Vanderbilt University – Oxford Poverty and Human Development Initiative, University of Oxford), **M. Santos** (University of Oxford and Consejo Nacional de Investigaciones Cientificas y Tecnicas-Universidad Nacional del Sur)
The Measurement of Multidimensional Poverty and Chronic Poverty: Same Toolkit?

24 July 2010
15:30 – 17:00

Room: Γ-604

Session B-11

«Inequality and Poverty 7»

Chairperson – **P. Brunori** (Università degli Studi di Bari and CORE)

L. Roope, H. Zank, I. Dutta (University of Manchester)
Intertemporal Poverty Measurement

E. Savaglio (DMQTE, University of Pescara & DEP, University of Siena)
On multidimensional inequality with variable household weight

P. Brunori (Università degli Studi di Bari and CORE), **F. Ferreira** (The World Bank),
V. Peragine (Università di Bari)
Opportunity-sensitive poverty measurement

Section C: «Strategic Voting»

22 July 2010
08:30 – 10:00

Room: Γ-605

Session C-03

«Strategic Voting 1»

Chairperson – **D. Karabekyan** (State University – Higher School of Economics)

T. Lindner (Karlsruhe Institute of Technology),

K. Nehring (University of California Davis),

C. Puppe (Karlsruhe Institute of Technology)

Which Voting Rule Is More Manipulable? Results from Simulation Studies

K. Van der Straeten (Toulouse School of Economics), **J.-F. Laslier**

Strategic voting in run-off elections

D. Karabekyan (State University – Higher School of Economics), **F. Aleskerov**, **R. Sanver**,
V. Yakuba

*Degree of Manipulability and Efficiency of Manipulation of Known Social Choice Rules
in the Case of Multiple Choice*

22 July 2010
10:30 – 12:30

Room: Γ-605

Session C-04

«Strategic Voting 2»

Chairperson – **S. Barberà** (Universitat Autònoma de Barcelona)

V. Block (Karlsruhe Institute of Technology)

Efficient and Strategy-Proof Voting over Connected Coalitions: A Possibility Result

D. Berga (Universitat de Girona), **S. Barberà** (Universitat Autònoma de Barcelona),

B. Moreno (Universidad de Màlaga)

Single-dipped preferences

A. Reffgen, **L. Svensson** (Lund University)

Strategy-proof voting for multiple public goods

B. Moreno (Universidad de Màlaga), **S. Barberà** (Universitat Autònoma de Barcelona),

D. Berga (Universitat de Girona)

On the design of group strategy-proof mechanisms: domains, ranges and special conditions

22 July 2010
16:00 – 18:00

Room: Γ-605

Session C-05

«Strategic Voting 3»

Chairperson – **S. Barberà** (Universitat Autònoma de Barcelona)

S. Serizawa (Institute of Social and Economic Research, Osaka University),
D. Berga, K. Hatsumi

Maximal domain for strategy-proof rule in multi-object social choice model

A. Slinko, S. White (The University of Auckland)

Is it Ever Safe to Vote Strategically? An Extension to Gibbard-Satterthwaite Theorem

S. Sato (Fukuoka University)

Adjacent manipulation

S. Barberà (Universitat Autònoma De Barcelona), **D. Berga** (Universitat De Girona),
B. Moreno (Universidad De Màlaga)

Two necessary conditions for strategy-proofness: when are they sufficient?

24 July 2010
13:30 – 15:00

Room: Γ-609

Session C-10

«Strategic Voting 4»

Chairperson – **N. Korgin** (Institute of control sciences)

S. Chatterji (School of Economics Singapore Management University), **A. Sen, R. Sanver**
On domains that admit well-behaved strategy-proof social choice functions

S. Roy (Maastricht University), **A. Sen** (ISI), **T. Storcken** (UM)

An extreme point characterization of strategy proof Probabilistic rules in single peaked domain

N. Korgin (Institute of control sciences)

Constructive algorithm of verification feasibility of generalized median voter schemes on compact ranges

Section D: «Games, Coalitions and their Applications»

21 July 2010
11:30 – 13:30

Room: F-606

Session D-01

«Games and their Applications 1»

Chairperson – **C. Bevia** (Universitat Autònoma de Barcelona)

S. Baumann (University of Le Havre)

Protection, Alliance and Negotiation against a Terrorist Threat

D. Voliotis (University of Piraeus)

Arbitrage Inefficiency and Regulation in Multi-Stage Market Games

S. Courtin (CREM, Université de Caen Basse Normandie), **N. Andjiga** (Ecole Normale Supérieur)

Coalitions Configuration and Share Function

C. Bevia (Universitat Autònoma de Barcelona), **L. Corchon** (Universidad Carlos III de Madrid), **Y. Yasuda** (National Graduate Institute for Policy Studies)

Oligopolistic equilibrium and bankruptcy

21 July 2010
15:00 – 17:00

Room: F-606

Session D-02

«Games and their Applications 2»

Chairperson – **I. Milchtaich** (Bar-Ilan University)

G. van der Laan, R. van den Brink, N. Moes (VU Amsterdam)

A class of solutions for river games with multiple springs and externalities

J. Jimenez-Gomez (Universidad Politecnica De Cartagena and Universidad De Alicante),

M. Marco-Gil, P. Gadea-Blanco (Universidad Politecnica De Cartagena)

Some game-theoretic grounds for meeting people half-way

H. Peters (Maastricht University), **M. Atlamaz, C. Berden, D. Palvolgyi, D. Vermeulen**

Non-cooperative approaches to claims or bankruptcy problems

I. Milchtaich (Bar-Ilan University)

Stability and Altruism in Nonatomic Games

22 July 2010
08:30 – 10:00

Room: Γ-606

Session D-03

«Games and their Applications 3»

Chairperson – **J. Masso** (Universitat Autònoma de Barcelona)

J. Izquierdo (University of Barcelona), **C. Rafels** (Universitat de Barcelona)
Convex games and bargaining sets

M. Gines-Vilar, J. Garcia-Segarra (University Jaume I Castello)
Asymmetric and Monotonic solutions under probabilistic uncertainty: an axiomatic approach

J. Masso (Universitat Autònoma de Barcelona), **A. Neme** (Universidad Nacuinal de San Luis)
On cooperative solutions of a generalized assignment game: limit theorems to the set of competitive equilibria

22 July 2010
10:30 – 12:30

Room: Γ-606

Session D-04

«Coalitions»

Chairperson – **O. Kibris** (Sabanci University)

M. Albizuri (University of the Basque Country), **J. Vidal-Puga**
Values and coalition configurations

J. Stecher (Carnegie Mellon University, Tepper School of Business),
G. Grønnevet (Norwegian School of Economics and Business Administration (NHH))
Credit Market, Board Size, and Board Composition

P. Ruys (Tilburg University, the Netherlands)
Social Choice and Culture

O. Kibris (Sabanci University), **A. Kibris**
On the Investment Implications of Bankruptcy Laws

23 July 2010
10:30 – 12:30

Room: Г-604

Session D-06

«Games and their Applications 4»

Chairperson – **K. Sonin** (NES)

E. Ramaekers (Center for Operations Research and Econometrics – Fonds de la Recherche Scientifique), **G. Valletta** (Maastricht University)

The Shapley value for the fair allocation of an indivisible good

I. Katsev (St. Petersburg Institute for Economics and Mathematics, Russian Academy of Sciences)

The Shapley value for games with restricted cooperation

R. van den Brink (Tinbergen Institute and VU University), **Y. Funaki**

Axiomatization and Implementation of Discounted Shapley Values

K. Sonin (NES), **D. Acemoglu** (MIT), **G. Egorov** (Northwestern), **I. Khovanskaya** (Higher School of Economics)

A Model of Balance of Power

23 July 2010
14:00 – 16:00

Room: Г-604

Session D-07

«Games and their Applications 5»

Chairperson – **A. Slinko** (University of Auckland)

E. Yanovskaya (Saint-Petersburg Institute for Economics and Mathematics, Russian Academy of Sciences)

The Dutta-Ray solution for games with restricted cooperation

J. Zarzuelo (Basque Country University), **M. Hinojosa**, **E. Romero**

The Consistency of the Harsanyi NTU solution

J. Vidal-Puga (Universidade de Vigo)

A non-cooperative approach to the ordinal Shapley rule

T. Gvozdeva (The University of Auckland), **A. Slinko** (University of Auckland)

Weighted and Roughly Weighted Simple Games.

Section E: «Voting and Elections»

21 July 2010
11:30 – 13:30

Room: Γ-609

Session E-01

«Voting and Elections 1»

Chairperson – **M. Kilgour** (Wilfrid Laurier University)

S. Brams (New York University), **M. Kilgour** (Wilfrid Laurier University)
Satisfaction Approval Voting

G. Myles, **S. Chakravarty** (University of Exeter), **T. Kaplan** (University of Haifa)
The Benefits of Costly Voting

A. Artabe (University of the Basque Country), **A. Laruelle** (University of the Basque Country and Ikerabsque), **F. Valenciano** (University of the Basque Country)
Voting rules with abstention and no showing up: Preferences and actions

M. Kilgour (Wilfrid Laurier University)
Approval Balloting for Multi-Winner Elections

21 July 2010
15:00 – 17:00

Room: Γ-609

Session E-02

«Voting and Elections 2»

Chairperson – **A. Zakharov** (State University-Higher School of Economics)

G. Pech (American University in Bulgaria)
A Median Voter Theorem for Proportional Representation Systems

J.-F. Laslier (Ecole Polytechnique), **B. Dutta** (University of Warwick),
Costless honesty in voting

A. Valeu (Universite de Caen), **F. Louis-Aime** (Universite de Douala), **M. Boniface** (Universite de Caen)
Further results on vote trading, logrolling and Anscombe's paradox with dichotomous votes

A. Zakharov (State University-Higher School of Economics)
An alternative approach to Bayesean estimation of voting models

22 July 2010
10:30 – 12:30

Room: Г-609

Session E-04

«Voting and Elections 3»

Chairperson – **V. Brosi** (University of York, UK School of Politics, Economics and Philosophy)

D. Porello (Institute for Logic Language & Computation, University of Amsterdam)
Verbalizing Voting Dimension

F. Marhuenda (Universidad Carlos III), **A. Gomberg** (ITAM), **I. Ortuño-Ortin** (U Carlos III)
Endogenous Party Platforms: Stochastic' Membership

G. Zudenkova (University Carlos III of Madrid)
Split-Ticket Voting: An Implicit Incentive Approach

V. Brosi (University of York, UK School of Politics, Economics and Philosophy),
A. Bhattacharya (University of York, Departement of Economics and Related Studies),
F. Ciardiello (University of Foggia)
On von Neumann and Morgenstern's Stable Sets in Spatial Voting Situations (Extended Abstract)

22 July 2010
16:00 – 18:00

Room: Г-609

Session E-05

«Voting and Elections 4»

Chairperson – **T. Davies** (Stanford University)

A. Karpov (State University – Higher School of Economics), **V. Volsky** (Institute of Control Science RAS)
Shortcomings of Australian version of Single Transferable Vote

F. Martinez-Mora (University of Leicester),
M. Puy (Universidad de Málaga)
Off-the-peak preferences over government size

E. Panova (Universite du Quebec a Montreal)
Informative Campaign Promises

T. Davies (Stanford University)
Election Validity and Ballot Openness

23 July 2010
10:30 – 12:30

Room: Г-609

Session E-06

«Voting and Elections 5»

Chairperson – **L. Kóczy** (Obuda University, Keleti Faculty of Business and Management)

A. Nicolo (University of Padova), **J. Eguia** (Department of Politics New York University)
Information and Elections

P. Chebotarev (Institute of Control Sciences of the Russian Academy of Sciences),
A. Loginov, Y. Tsodikova, Z. Lezina, V. Borzenko
Voting in a stochastic environment: the utility decreases as a faction expands

C. List (London School of Economics), **R. Luskin, J. Fishkin, I. McLean**
Deliberation, Single-Peakedness, and the Possibility of Meaningful Democracy: Evidence from Deliberative Polls

L. Kóczy (Obuda University, Keleti Faculty of Business and Management)
The men who were not even there: Legislative voting with absentees

23 July 2010
14:00 – 16:00

Room: Г-609

Session E-07

«Voting and Elections 6»

Chairperson – **A.S. Belenky** (NRU-HSE and MIT)

M. Tanvé (Obuda University Paris School of Economics)
Issue-Convergence in the Electoral Campaign

H. Llavador (Universitat Pompeu Fabra), **J. Colomer** (CSIC and IAE)
An Agenda-Setting Model of Electoral Competition

A. Tangian (Hans-Boeckler-Foundation)
Evaluation of parties and coalitions with regard to party manifestos

A.S. Belenky (NRU-HSE and MIT)
The National Popular Vote in U.S. Presidential Elections: Myths, Realities, and Alternatives

Section F: «Judgement Aggregation»

22 July 2010
10:30 – 12:30

Room: F-513

Session F-04

«Judgement Aggregation 1»

Chairperson – **K. Nehring** (UC Davis)

A. Miroiu (National School of Political and Administrative Studies)
Narrow and broad individual views

C. Duddy (NUI Galway), **A. Piggins** (National University of Ireland Galway)
Many-valued judgment aggregation: characterizing the possibility/impossibility boundary for an important class of agendas

K. Nehring (University of California, Davis), **M. Pivato**
Supermajoritarian efficient judgement aggregation, part I: Separability and support rules

M. Pivato (Department of Mathematics, Trent University), **K. Nehring** (UC Davis)
Supermajoritarian efficient judgement aggregation, part II: Homogeneity, reinforcement and the median rule.

22 July 2010
16:00 – 18:00

Room: F-604

Session F-05

«Judgement Aggregation 2»

Chairperson – **C. List**(LSE)

M. Pivato (Trent University)
Social choice with approximate interpersonal comparisons of well-being

N. Li (Universitat Autònoma de Barcelona)
Methods for Sequential Non-Binary Judgment Aggregation

I. Bozbay (Maastricht University), **F. Dietrich** (London School of Economics, Maastricht University), **H. Peters** (Maastricht University)
Judgment aggregation in search for the truth

C. List (LSE), **F. Dietrich** (London School of Economics & Maastricht University)
A reason-based theory of rational choice



Section G: «Choice and Utility»

21 July 2010
15:00 – 17:00

Room: Γ-604

Session G-02

«Choice and Utility 1»

Chairperson – **T. Marchant** (Ghent University),

N. Gravel (University of Aix-Marseille, Groupe de Recherche en Economie Quantitative d'Aix-Marseille & Institut D'Economie Publique), **T. Marchant** (Univeversity of Ghent), **A. Sen** (Indian Statistical Institute)

Uniform Expected Utility Criteria for Decision Making under Ignorance or Objective Ambiguity

K. Kamaga, T. Adachi (Waseda University), **S. Cato** (University of Tokyo)

Extended anonymity and Paretian Suzumura consistent relations on infinite utility streams

C. Traeger (University of Californial at Berkeley)

Subjective Risk, Confidence, and Ambiguity

T. Marchant (Ghent University), **D. Bouyssou** (CNRS and Université Paris Dauphine)

Subjective expected utility on the basis of ordered categories

22 July 2010
16:00 – 18:00

Room: Γ-510

Session G-05

«Choice and Utility 2»

Chairperson – **G. Gaballo** (Columbia University)

S. Mukherjee (Indian Statistical Institute, Delhi)

Choice In Tree-Based Decision Problems

P. Manzini (University of St. Andrews), **M. Mariotti**

Choice by lexicographic semiorders

M. Mariotti (University of St Andrews), **P. Manzini**

Categorize Then Choose: Boundedly Rational Choice and Welfare

G. Gaballo (Department of Economics, Columbia University), **E. Savaglio** (Dmqte, University of Pescara & DEP, University of Siena)

Freedom of choice as individual diversity

23 July 2010
14:00 – 16:00

Room: Г-510

Session G-07

«Choice and Utility 3»

Chairperson – **N. Kukushkin** (Russian Academy of Sciences, Dorodnicyn Computing Center)

M. Ballester (Universitat Autònoma de Barcelona), **J. Apesteguia** (Universitat Pompeu Fabra)
A measurement of rationality and welfare

N. Baigent (London School of Economics and Graz University)
Preferences for Acts and Choice Functions on Outcomes

J. Alcalde-Unzu (Public University of Navarre), **M. Vorsatz** (FEDEA)
Do we agree? Measuring the cohesiveness of preferences

N. Kukushkin (Russian Academy of Sciences, Dorodnicyn Computing Center)
Strategic complementarity and substitutability without transitive indifference

23 July 2010
16:30 – 18:00

Room: Г-510

Session G-08

«Choice and Utility 4»

Chairperson – **C. Puppe** (Karlsruhe Institute of Technology)

A. Subochev (State University – Higher School of Economics (Moscow)), **F. Aleskerov**
(State University – Higher School of Economics)
*Stable solutions based on majority rule: uncovered set, minimal weakly stable set, top cycle
and their generalizations*

M. Sahn (Technische Universität München), **M. Runkel**
The Contest Winner: Gifted or Venturesome?

C. Puppe (Karlsruhe Institute of Technology), **K. Nehring** (UC Davis)
How Much Choice?

Section H: «Bargaining»

23 July 2010
16:30 – 18:00

Room: Г-605

Session H-08

«Bargaining 1»

Chairperson – **S. Guriev** (NES)

G. Artemov (University of Melbourne), **S. Guriev** (NES),

D. Kvasov (University of Adelaide)

Finitely Repeated Bilateral Trade with Renegotiation

A. Tangian (Hans-Boeckler-Foundation)

A negotiation model for collective bargaining

V. Matveenko (Institute for Economics and Mathematics at St. Petersburg, Russian Academy of Sciences)

Bargaining Powers, Weights of Individual Utilities, and Implementation of the Nash Bargaining Solution

24 July 2010
13:30 – 15:00

Room: Г-604

Session H-10

«Bargaining 2»

Chairperson – **C. Ponsati** (Institut d'Anàlisi Econòmica – C.S.I.C.)

A. Predtetchinski (Maastricht University)

One-dimensional bargaining

Y. Ju (University of York), **P. Borm** (Tilburg University), **D. Wettstein** (Ben Gurion University of the Negev)

Multilateral Bargaining, Values and Implementation with Coalitional Externalities

C. Ponsati (Institut d'Anàlisi Econòmica – C.S.I.C.), **D. Cardona**

Bargaining one-dimensional policies and the efficiency of super majority rules

Section I: «Mechanism Design»

21 July 2010
11:30 – 13:30

Room: Г-513

Session I-01

«Mechanism Design 1»

Chairperson – **I. Sanver** (Bilgi University)

D. Dimitrov (Saarland University), **E. Lazarova**
Coalitional matchings

A. Westkamp (Chair of Economic Theory II, University of Bonn), **L. Ehlers**
Breaking ties in School Choice: (Non-)specialized schools

T. Kojima (Graduate School of Economics, Waseda University)
On the existence of Pareto optimal matchings without acyclicity

I. Sanver (Bilgi University)
Minimal Converse Consistent Extension of the Men Optimal Solution

21 July 2010
15:00 – 17:00

Room: Г-513

Session I-02

«Matching»

Chairperson – **K. Tadenuma** (Hitotsubashi University)

G. Haeringer (Universitat Autònoma de Barcelona), **I. Vincent** (Université Paris-Dauphine),
R. Nuria (Universitat Autònoma de Barcelona)
Knocking out the supply and sorting in centralized job markets

R. Golanski (Warsaw School of Economics)
Properties of matching algorithm in college admission problem with variable capacity quotas

K. Tadenuma (Hitotsubashi University)
Partnership-Enhancement and Stability in Matching Problems

L. Ehlers (U de Montreal), **B. Klaus**
Allocation via Deferred-Acceptance under Responsive Priorities

22 July 2010
08:30 – 10:00

Room: Г-513

Session I-03

«Mechanism Design 2»

Chairperson – **J. Weymark** (Vanderbilt University)

B. Dutta (University of Warwick), **A. Sen** (Indian Statistical Institute)
Nash Implementation with Partially Honest Individuals

L. Polishchuk (State University- Higher School of Economics),
T. Alexander (New Economic School)
Endogenous Rent-Seeking Success Functions: A Mechanism Design Approach

J. Weymark (Vanderbilt University), **K. Cuff** (McMaster University), **S. Hong** (Vanderbilt University), **J. Schwartz** (Kennesaw State University), **Q. Wen** (Vanderbilt University)
Dominant Strategy Implementation with a Convex Product Space of Valuations

22 July 2010
16:00 – 18:00

Room: Г-513

Session I-05

«Mechanism Design 3»

Chairperson – **A. Bogomolnaia** (Rice University)

O. Bochet (University of Bern), **O. Ilklic** (Maastricht University), **H. Moulin** (Rice University)
Clearing supply and demand under bilateral constraints

A. Bhattacharya (University of York), **H. Newhouse**
Allocative Efficiency and an Incentive Scheme for Research

K. Pronin
Differential Information Economies and Incomplete Markets

A. Bogomolnaia (Rice University)
Scheduling Problem with Multislot Demand

23 July 2010
10:30 – 12:30

Room: Г-513

Session I-06

«Networks 1»

Chairperson – **D. Novikov** (Institute of Control Sciences, RAS)

R. Martinez (University of Malaga)
Cost allocation in augmented networks.

R. Ilklic (Maastricht University)
Cournot Competition on a Network of Markets and Firms

M. Umezawa (Daito Bunka University)
The replacement principle for the provision of multiple public goods on tree networks

D. Novikov, D. Gubanov, N. Korgin (Institute of Control Sciences, RAS)
Network expertise and dynamics of reputation

23 July 2010
14:00 – 16:00

Room: Г-513

Session I-07

«Mechanism Design 4»

Chairperson – **S. Serizawa** (Institute of Social and Economic Research, Osaka University)

P. Piacquadio (Center of Operations Research and Econometrics)
Efficiency and No-envy in Dynamic Resource Allocation

A. Vasin, M. Dolmatova (Lomonosov Moscow State University)
Does SFE correspond to expected behavior at the uniform price auction?

T. Andersson (Lund University), **C. Andersson** (Lund University), **D. Talman** (Tilburg University)
Sets in Excess Demand in Ascending Auctions with Unit-Demand Bidders

S. Morimoto, S. Serizawa (Osaka University)
Ascending Auction with Income Effect: Strategy-proof and Efficient Allocation Rules of Heterogeneous Indivisible Goods

23 July 2010
16:30 – 18:00

Room: Г-513

Session I-08

«Mechanism Design 5»

Chairperson – **M. Hidalgo** (University Pablo de Olavide)

A. Nicolo (Universita degli Studi di Padova)
C. Rodriguez-Alvarez (Depto. Economia Cuantitativa. Universidad Complutense de Madrid),
Pairwise Kidney Exchange: Age Based Preferences

E. Heo (University of Rochester)
Random Assignment Problem with Quota: Fairness and Incentives

M. Hidalgo (University Pablo de Olavide)
Tracking can be more Equitable than Mixing: Peer effects and college attendance

24 July 2010
10:30 – 12:00

Room: Г-513

Session I-09

«Mechanism Design 6»

Chairperson – **Naeemi** (Maastricht University)

R. Mueller, A. Berger, S. Naeemi (Maastricht University)
Path-Monotonicity and Truthful Implementation

J. Miquel-Florensa (Toulouse School of Economics)
Lending contracts under moral hazard and adverse selection: technical cooperation and principal's incentives

Y. Sprumont (University of Montreal)
An axiomatization of the serial cost-sharing method

24 July 2010
13:30 – 15:00

Room: Γ-513

Session I-10

«Mechanism Design 7»

Chairperson – **A. Sen** (Indian Statistical Institute)

O. Gorelkina (Toulouse School of Economics)
Dynamic Implementation without a Common Prior

A. Yamada (Sapporo University), **N. Yoshihara** (Hitotsubashi University)
Nash Implementation in Production Economies with Unequal Skills: A Complete Characterization

A. Sen (Indian Statistical Institute), **M. Bhargava** (J.P. Morgan), **D. Majumdar** (Concordia University)
Incentive-Compatible Voting Rules with Positively Correlated Beliefs

24 July 2010
15:30 – 17:00

Room: Γ-513

Session I-11

«Networks 2»

Chairperson – **R. Juarez** (University of Hawaii, Department of Economics)

T. Truyts (Katholieke Universiteit Leuven Center for Economic Studies),
E. Schokkaert (K.U.Leuven)
Support for Solidarity and Social Structure

J. Caulier (FUSL), **A. Mauleon** (FUSL), **V. Vannetelbosch** (CORE)
Coalitional Network Games

R. Juarez (University of Hawaii, Department of Economics), **R. Kumar** (Rice University)
Implementing Efficient Graphs in Connection Networks

Section J: «Stochastic analysis»

23 July 2010
14:00 – 16:00

Room: Γ-606

Session J-07

«Stochastic analysis»

Chairperson – **H. Nurmi** (University of Turku)

P. Moyes (GREThA), **S. Bazen** (Groupe de Recherche en Économie d'Aix-Marseille)
Elitism and Stochastic Dominance

D. Vermeulen, H. Peters (Maastricht University)
Generalized stochastic dominance and bad outcome aversion

K. Decancq (Katholieke Universiteit Leuven)
Copula-based Orderings of Multivariate Dependence

H. Nurmi (University of Turku)
What's wrong with Granger causality?

Section K: «Fair Division»

22 July 2010
08:30 – 10:00

Room: Γ-609

Session K-03

«Fair Division»

Chairperson – **E. Athanasiou** (Carnegie Mellon University)

G. Bergantiños (Universidade de Vigo), **J. Massó** (UAB), **A. Neme** (Conyct)
The division problem with maximal capacity constraints

V. Manjunath (University of Rochester)
When too little is as good as nothing at all: Rationing a disposable good among satiable people with acceptance thresholds

E. Athanasiou (Carnegie Mellon University)
A Solomonian solution to the problem of assigning a private indivisible object

Section L: «Public Goods, Taxation and Distribution»

23 July 2010
10:30 – 12:30

Room: Γ-605

Session L-06

«Public Goods, Taxation and Distribution 1»

Chairperson – **W. Thomson** (University of Rochester)

C. Feilcke (Technische Universität München)
Endogenous Information and Compulsory Insurance

A. Calo-Blanco (University Pablo De Olavide), **A. Villar** (University Pablo De Olavide & Ivie)
Quality of education and equality of opportunity in Spain: Lessons from PISA

M. Garcia-Valinas (Toulouse School of Economics, LERNA-INRA), **J. Cordero-Ferrera** (University of Extremadura), **M. Muñoz-Perez** (University of Oviedo), **C. Manchón-López** (University of Extremadura)
Assessing students' performance on environmental science in PISA 2006

W. Thomson (University of Rochester), **Y. Chun**
Overlapping public goods

23 July 2010
16:30 – 18:00

Room: Γ-606

Session L-08

«Public Goods, Taxation and Distribution 2»

Chairperson – **M. Dittrich** (Chemnitz University of Technology)

S. Franco (Universidade Lusófona de Lisboa), **B. Cutter**, **A. DeWoody**
Do Parking Requirements Significantly Increase The Area Dedicated To Parking?
A Test Of The Effect Of Parking Requirements Values In Los Angeles County

L. Esposito (University of East Anglia), **L. Corazzini** (University of Padua), **F. Majorano** (UN)
Reign in Hell or Serve in Heaven? A Cross-country Journey into the Relative vs Absolute Perceptions of Wellbeing

M. Dittrich (Chemnitz University of Technology), **A. Knabe** (Free University Berlin)
Wage and employment effects of non-binding minimum wages

24 July 2010
10:30 – 12:00

Room: Γ-605

Session L-09

«Public Goods, Taxation and Distribution 3»

Chairperson – **A. Trannoy** (Ecole Des Hautes Etudes En Sciences Sociales)

G. Valletta (Maastricht University), **E. Athanasiou** (Carnegie Mellon University)
Education policies, income taxation and fairness

A. Urazov, A. Vasin (MSU)
Optimal auditing with suppression of corruption

A. Trannoy (Ecole Des Hautes Etudes En Sciences Sociales), **D. Henriet , P. Pintus**
Optimal Non-linear Income Tax under Income Uncertainty: the Quasi-linear Case

24 July 2010
13:30 – 15:00

Room: Γ-605

Session L-10

«Public Goods, Taxation and Distribution 4»

Chairperson – **L. Simula** (Uppsala University and Uppsala Center for Fiscal Studies)

L. Simula, S. Blomquist (Uppsala University and Uppsala Center for Fiscal Studies)
Marginal Deadweight Loss when the Income Tax is Nonlinear

K. Pogorelskiy (State University – Higher School of Economics), **C. Seidl** (University of Kiel),
S. Traub (University of Bremen)
Tax progression: international and intertemporal comparisons using LIS data

M. Nunez Rodriguez (Cnrs Cergy)
Political Competition over Distortionary Taxation

Section M: «Computational Social Choice»

23 July 2010
14:00 – 16:00

Room: Γ-605

Session M-07

«Computational Social Choice 1»

Chairperson – **U. Endriss** (University of Amsterdam)

T. Walsh (NICTA and University of New South Wales)
Where are the hard manipulation problems?

G. Erdelyi (University of Duesseldorf), **L. Piras, J. Rothe**
Control Complexity in Fallback Voting

J. Rothe (University of Duesseldorf), **P. Faliszewski, E. Hemaspaandra, L. Hemaspaandra**
The Shield that Never Was: Societies with Single-Peaked Preferences are More Open to Manipulation and Control

P. Faliszewski (AGH University of Science and Technology), **E. Elkind, A. Slinko**
Campaign Management via Bribery

24 July 2010
15:30 – 17:00

Room: Γ-605

Session M-11

«Computational Social Choice 2»

Chairperson – **U. Endriss** (University of Amsterdam)

U. Endriss, U. Grandi, D. Porello, (University of Amsterdam),
Complexity of Judgment Aggregation: Safety of the Agenda

S. Belev, G. Kalyagin (Moscow State University)
Collective Actions and Rational Expectations

A. Slinko (University of Auckland), **E. Elkind** (Nanyang Technological University),
P. Faliszewski
Cloning in Elections

Section N: «Welfare Economics and Models of Political Economy»

21 July 2010
11:30 – 13:30

Room: Γ-605

Session N-01

«Climate Change»

Chairperson – **J. Roemer** (Yale University)

J. Silvestre (University of California, Davis), **H. Llavorador** (Universitat Pompeu Fabra),
J. Roemer (Yale University)

A dynamic analysis of human welfare in a warming planet

S. Dietz (London School of Economics and Political Science)

Utility as the informational basis of climate change strategies, and some alternatives

21 July 2010
15:00 – 17:00

Room: Γ-605

Session N-02

«Climate Change 2»

Chairperson – **G. Asheim** (University of Oslo)

G. Asheim (University of Oslo)

Climate change and intergenerational equity

R. Miller (Cornell University)

Greenhouse Justice: The Model of Teamwork

22 July 2010
16:00 – 18:00

Room: Γ-606

Session N-05

«Welfare Economics 1»

Chairperson – **S. Zuber** (Université catholique de Louvain, CORE and Chair Lhoist Berghmans in Environmental Economics)

P. Verme (University of Torino)

Happiness, Deprivation and the Alter Ego

F. Palmisano (University of Bari), **R. Aaberge** (Statistics Norway, IZA), **V. Peragine** (University of Bari)

Long Term Mobility and Equality of Opportunity

M. Lombardi (Maastricht University School of Business and Economics),

R. Veneziani (Queen Mary University of London)

Liberal Egalitarianism and the Harm Principle

S. Zuber (Université catholique de Louvain, CORE)

Justifying social discounting: the rank-discounted utilitarian approach

23 July 2010
10:30 – 12:30

Room: Γ-606

Session N-06

«Entrepreneurship, Sustainable Development and Legislation»

Chairperson – **M. Salles** (Institute for Social Choice and Welfare)

K. Banerjee (Florida Atlantic University)

On a dynamic programming approach to sustainable development

I. Ruiz Guerra (Cooperative Research Chair «Fundación Caja Rural de Toledo» – University of Castilla-La Mancha), **I. Molina Moreno** (University of Granada),

V. Manuel Martin López (Caja Rural de Toledo)

Entrepreneurist spirit of non profit making entities in Castilla-La Mancha (Spain)

M. Schneider (CER-ETH – Center of Economic Research at ETH Zurich)

The Larger the Better? The Role of Interest Group Size in Legislative Lobbying

M. Salles (Institute for Social Choice and Welfare), **F. Zhang** (CREM, University of Caen)

Rights revisited, and limited

24 July 2010
10:30 – 12:00

Room: Γ-606

Session N-09

«Welfare Economics 2»

Chairperson – **M. Grabisch** (University of Paris I)

A. Salmina (State University Higher School of Economics)

The role of the middle class in the development of welfare policy standards

R. Torres (Universitat de Girona)

Preferences and Society

M. Grabisch (University of Paris I), **U. Faigle**

A general discrete Choquet integral for ordered sets

24 July 2010
13:30 – 15:00

Room: Γ-606

Session N-10

«Welfare Economics 3»

Chairperson – **M. Fleurbaey**

L. Borisova (Breman University and Jacobs University), **C. Gerry** (UCL)

Explaining health outcomes in transition countries: A health systems analysis

J. Moreno-Ternero (Universidad de Málaga), **J. Roemer** (Yale University)

The political economy of health care finance

G. Ponthiere (Paris School of Economics), **M. Fleurbaey**, **M. Leroux**

Unequal Longevities and Compensation

24 July 2010
15:30 – 17:00

Room: Г-606

Session N-11

«Welfare Economics 4»

Chairperson – **M. Miyake** (Tohoku University)

O. Grimm, J. Becker, H. Gersbach (Center of Economic Research at ETH Zurich)
Debt-Sensitive Majority Rules

J. Perote-Pena (Universidad de Zaragoza), **A. Piggins** (NUI at Galway)
A model of deliberative and aggregative democracy

M. Miyake (Tohoku University)
Axiomatic characterization of aggregate consumer surplus measures for non-market goods

Section O: «Power and Influence»

24 July 2010
10:30 – 12:00

Room: Г-609

Session O-09

«Power and Influence 1»

Chairperson – **R. van den Brink** (VU University)

A. Rusinowska-Grabisch (CNRS (Centre National de la Recherche Scientifique) – University of Lyon, GATE – Groupe d'Analyse et de Théorie Economique), **M. Grabisch** (CES, Université Paris 1)
A model of influence with a continuum of actions

D. Shvarts (State University – Higher School of Economics)
Power indices as elements of projective space

F. Steffen (University of Liverpool Management School), **R. van den Brink** (VU University),
A. Rusinowska (CNRS UMR 5824 – Université Lumière Lyon 2 – Ecole Normale Supérieure LSH)
Measuring Power and Satisfaction in Societies with Opinion Leaders: An Axiomatization

24 July 2010
15:30 – 17:00

Room: Г-609

Session O-11

«Power and Influence 2»

Chairperson – **Michel Le Breton** (TSE)

L. Corchon (Universidad Carlos III), **A. Romero** (U. Carlos III)
Exploitation and power in dynamic organizations

V. Lepetyuk (Universidad de Alicante)
Time Consistency Problem in a Monetary Union

V. Zaporozhets (Toulouse School of Economics, Laboratoire d'Economie des Ressources Naturelles, Institut National de la Recherche Agronomique), **Michel Le Breton** (TSE)
Voting Power in the European Union

Section P: «Experiments»

23 July 2010
16:30 – 18:00

Room: Γ-604

Session P-08

«Experiments»

Chairperson – **K. Pogorelskiy** (State University – Higher School of Economics)

L. Schwettmann, M. Ahlert, K. Funke (Martin-Luther-University Halle-Wittenberg)
Thresholds, Productivity, and Context: An Experimental Study on Determinants of Distributive Behaviour

J. Pais (ISEG/Technical University of Lisbon and Research Unit on Complexity and Economics), **F. Klijn, M. Vorsatz**
Preference Intensities and Risk Aversion in School Choice: A Laboratory Experiment

A. Belianin (State University – Higher School of Economics), **F. Aleskerov, K. Pogorelskiy**
Power and preferences: an experimental approach

Date	Room Γ-510	Room Γ-513	Room Γ-609
20.07.2010			
18.00 - 22.00	Preliminary registration (Cultural Center, Entrance Lobby)		
21.07.2010			
8.30-9.30	Registration (Cultural Center, Entrance Lobby)		
9.30-9.40	Opening (Cultural Center, Great Conference Hall)		
9.40-11.00 (Presidential Address)	Presidential Address by John Roemer (Cultural Center, Great Conference Hall)		
11.00-11.30	Coffee-break (Γ-601)		
11.30-13.30 (Morning Session)	A-01: Aggregation 1 V. Merlin, T. Adachi, D. Mishra, C. Calsamiglia	I-01: Mechanism Design 1 D. Dimitrov, A. Westkamp, T. Kojima, I. Sanver	E-01: Voting and Elections 1 S. Brams, G. Myles, A. Artabe, M. Kilgour
13.30-15.00	Lunch		
15.00-17.00 (Afternoon Session)	A-02: Aggregation 2 C. Duddy, F. Aleskerov, U. Grandi, R. Deb	I-02: Matching G. Haeringer, R. Golanski, K. Tadenuma, L. Ehlers	E-02: Voting and Elections 2 G. Pech, J.-F. Laslier, A. Valeu, A. Zakharov
18.00-23.00	Moscow-river trip (Buses will be provided)		
22.07.2010			
8.00-8.30	Registration (Building «E», Entrance Lobby)		
8.30-10.00 (Morning Session I)	A-03: Aggregation 3 M. Gomez-Rua, L. Lorenzo, X. Mora	I-03: Mechanism Design 2 B. Dutta, L. Polishchuk, J. Weymark	K-03: Fair Division G. Bergantiños, V. Manjunath, E. Athanasiou
10.00-10.30	Coffee-break (Γ-601)		
10.30-12.30 (Morning Session II)	A-04: Aggregation 4 T. Storcken, A. Laruelle, J. Lainé, R. Sanver	F-04: Judgement Aggregation 1 A. Miroiu, C. Duddy, K. Nehring, M. Pivato	E-04: Voting and Elections 3 D. Porello, F. Marhuenda, G. Zudenkova, V. Brosi
12.30-14.00	Lunch/Council Meeting		
14.00-15.30 (Condorcet Lecture)	"Consistency, Choice, and Rationality" by Walter Bossert (Cultural Center, Great Conference Hall)		
15.30-16.00	Coffee-break (Γ-601)		
16.00-18.00 (Afternoon Session II)	G-05: Choice and Utility 2 S. Mukherjee, P. Manzini, M. Mariotti, G. Gaballo	I-05: Mechanism Design 3 O. Bochet, A. Bhattacharya, K. Pronin, A. Bogomolnaia	E-05: Voting and Elections 4 A. Karpov, F. Martinez-Mora, E. Panova, T. Davies

B-01: Inequality and Poverty 1

B. Zheng, J. Garcia-Lapresta,
P. Moyes, L. Bellani

D-01: Games, Coalitions and their Applications 1

S. Baumann, D. Voliotis, S. Courtin, C. Bevia

N-01: Climate Change 1

J. Silvestre, S. Dietz

G-02: Choice and Utility 1

N. Gravel, K. Kamaga, C. Traeger,
T. Marchant

D-02: Games, Coalitions and their Applications 2

G. van der Laan, J. Jimenez-Gomez,
H. Peters, I. Milchtaich

N-02: Climate Change 2

G. Asheim, R. Miller

B-03: Inequality and Poverty 2

F. Maniquet, K. Bosmans, N. Pestel

D-03: Coalitions

J. Izquierdo, M. Gines-Vilar, J. Masso

C-03: Strategic Voting 1

T. Lindner, K. Van der Straeten,
D. Karabekyan

B-04: Inequality and Poverty 3

R. Velez, E. Kogay, P. Luongo

D-04: Games, Coalitions and their Applications 3

M. Albizuri, J. Stecher, P. Ruys, O. Kibris

C-04: Strategic Voting 2

V. Block, D. Berga, A. Reffgen,
B. Moreno

F-05: Judgement Aggregation 2

M. Pivato, N. Li, I. Bozbay, C. List

N-05: Welfare Economics and Models of Political Economy 1

P. Verme, F. Palmisano, M. Lombardi,
S. Zuber

C-05: Strategic Voting 3

S. Serizawa, A. Slinko, S. Sato,
S. Barbera

Date	Room Г-510	Room Г-513	Room Г-609
23.07.2010			
8.00-8.30	Registration (Building «E», Entrance Lobby)		
8.30-10.00 (Arrow Lecture)	"Assessing risky social situations" by Marc Fleurbaey (Cultural Center, Great Conference Hall)		
10.00-10.30	Coffee-break (Г-601)		
10.30-12.30 (Morning Session)	A-06: Aggregation 5 P. Amoros, P. Perez-Asurmendi, A. Brevern, S. Koray	I-06: Networks 1 R. Martinez, R. Ilkic, M. Umezawa, D. Novikov	E-06: Voting and Elections 5 A. Nicolo, P. Chebotarev, C. List, L. Kóczy
12.30-14.00	Lunch/Editorial Meeting		
14.00-16.00 (Afternoon Session I)	G-07: Choice and Utility 3 M. Ballester, N. Baigent, J. Alcalde-Unzu, N. Kukushkin	I-07: Mechanism Design 4 P. Piacquadio, A. Vasin, T. Andersson, S. Morimoto	E-07: Voting and Elections 6 M. Tanvé, H. Llavador, A. Tangian A.S. Belenky
16.00-16.30	Coffee-break (Г-601)		
16.30-18.00 (Afternoon Session II)	G-08: Choice and Utility 4 A. Subochev, M. Sahm, C. Puppe	I-08: Mechanism Design 5 A. Nicolo, E. Heo, M. Hidalgo	B-08: Inequality and Poverty 4 C. Herrero, S. Seth, D. Van de Gaer
24.07.2010			
8.00-8.30	Registration (Building «E», Entrance Lobby)		
8.30-10.00 (SCW Prize Lecture)	SCW Prize Lecture by Christian List and Franz Dietrich and SSCW Meeting (Cultural Center, Great Conference Hall)		
10.00-10.30	Coffee-break (Г-601)		
10.30-12.00 (Morning Session)	A-09: Aggregation 6 A. Nichifor, S. Gordon, H. Moulin	I-09: Mechanism Design 6 S. Naeemi, J. Miquel-Florensa, Y. Sprumont	O-09: Power and Influence 1 A. Rusinowska-Grabisch, D. Shvarts, F. Steffen
12.00-13.30	Lunch		
13.30-15.00 (Afternoon Session I)	B-10: Inequality and Poverty 6 C. D'Ambrosio, S. Alkire, S. Seth	I-10: Mechanism Design 7 O. Gorelkina, A. Yamada, A. Sen	C-10: Strategic Voting 4 S. Chatterji, S. Roy, N. Korgin
15.00-15.30	Coffee-break (Г-601)		
15.30-17.00 (Afternoon Session II)	A-11: Aggregation 7 M. Martinez-Panero, T. Pena, S. Ghosh	I-11: Networks 2 T. Truys, J. Caulier, R. Juarez	O-11: Power and Influence 2 L. Corchon, V. Lepetyuk, V. Zaporozhets
18.00-23.00	Gala Dinner at Russian Historical Museum		

D-06: Games, Coalitions and their Applications 4

E. Ramaekers, I. Katsev,
R. van den Brink, K. Sonin

N-06: Entrepreneurship, Sustainable Development and Legislation

K. Banerjee, I. Ruiz Guerra, M. Schneider,
M. Salles

L-06: Public Goods, Taxation and Distribution 1

C. Feilcke, A. Calo-Blanco,
M. Garcia-Valinas, W. Thomson

D-07: Games, Coalitions and their Applications 5

E. Yanovskaya, J. Zarzuelo,
J. Vidal-Puga, T. Gvozdeva

J-07: Stochastic analysis

P. Moyes, D. Vermeulen, K. Decancq,
H. Nurmi

M-07: Computational Social Choice 1

T. Walsh, G. Erdelyi, J. Rothe,
P. Faliszewski

P-08: Experiments

L. Schwettmann, J. Pais,
K. Pogorelsky

L-08: Public Goods, Taxation and Distribution 2

S. Franco, L. Esposito, M. Dittrich

H-08: Bargaining 1

G. Artemov, A. Tangian, V. Matveenko

B-09: Inequality and Poverty 5

N. Hassoun, Y. Leonova,
C. Gigliarano

N-09: Welfare Economics and Models of Political Economy 2

A. Salmina, R. Torres, M. Grabisch

L-09: Public Goods, Taxation and Distribution 3

G. Valletta, A. Urazov, A. Trannoy

H-10: Bargaining 2

A. Predtetchinski, Y. Ju, C. Ponsati

N-10: Welfare Economics and Models of Political Economy 3

L. Borisova, J. Moreno-Tertero,
G. Ponthiere

L-10: Public Goods, Taxation and Distribution 4

L. Simula, K. Pogorelskiy, M. Nunez
Rodriguez

B-11: Inequality and Poverty 7

L. Roope, E. Savaglio, P. Brunori

N-11: Welfare Economics and Models of Political Economy 4

O. Grimm, J. Perote-Pena, M. Miyake

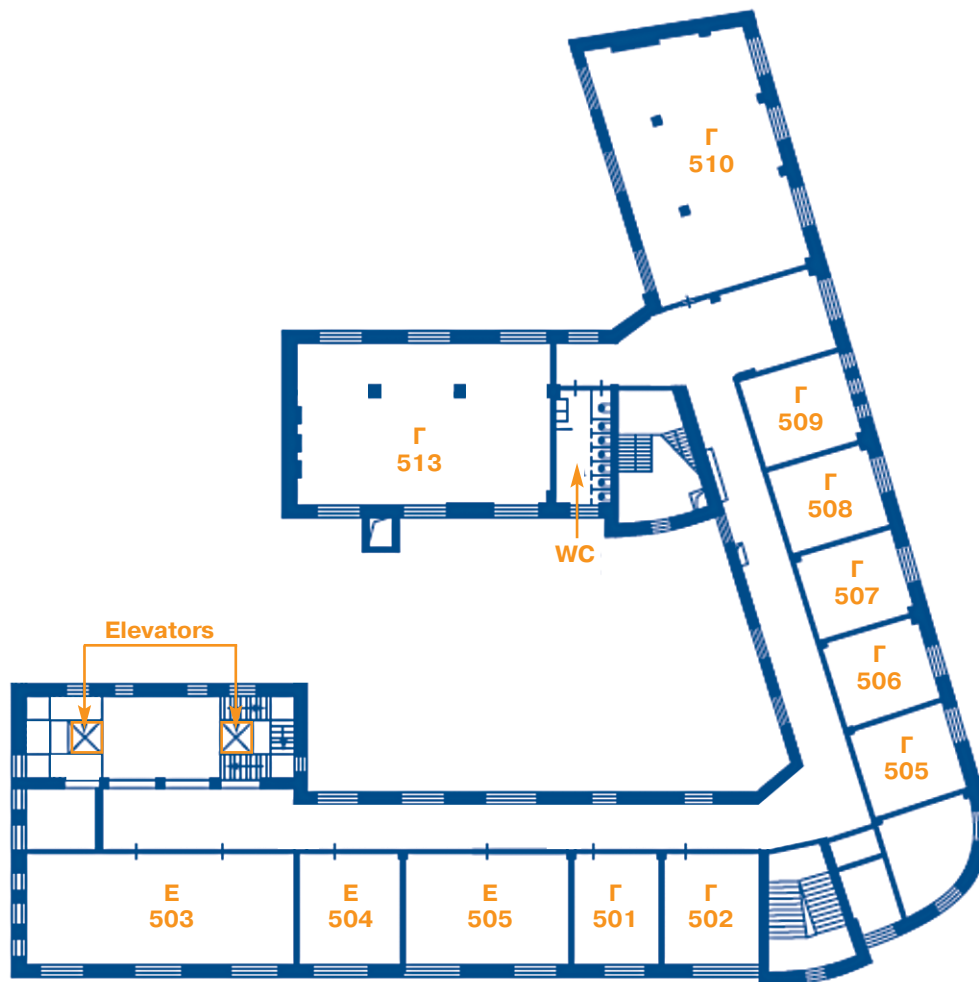
M-11: Computational Social Choice 2

U. Endriss, S. Belev, A. Slinko

Pokrovsky Boulevard, 11

Building **E** Building **Г**

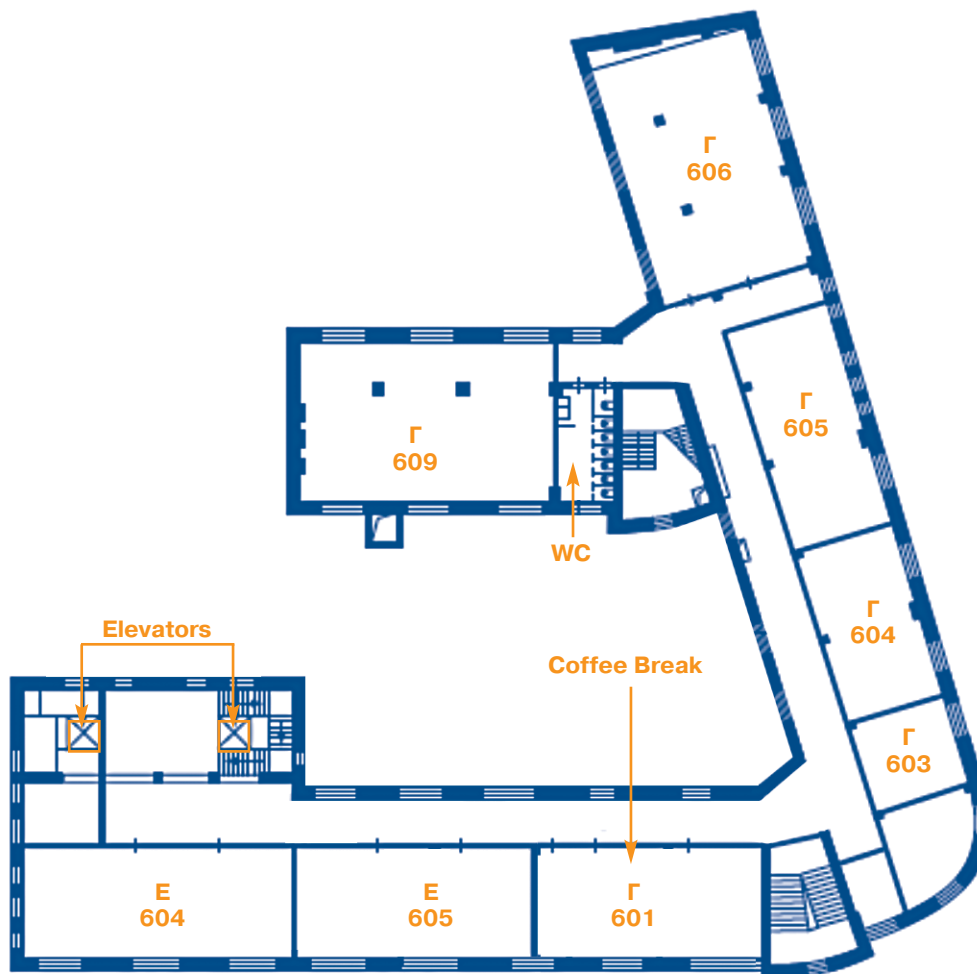
5th floor



Pokrovsky Boulevard, 11

Building **E** Building **Г**

6th floor



You can get to the Conference venue on foot (appr. 15 minutes) from:

- 1) Turgenevskaya ("Тургеневская") metro station (orange line), Chistye Prudy ("Чистые пруды") metro station (red line) or Sretenskii Boulevard ("Сретенский бульвар") metro station (light green line).
- 2) Kitay-gorod ("Китай-город") metro station (both purple and orange lines).
- 3) Chkalovskaya ("Чкаловская") metro station (light green line) or Kurskaya ("Курская") metro station (both brown (circle) and dark blue lines).

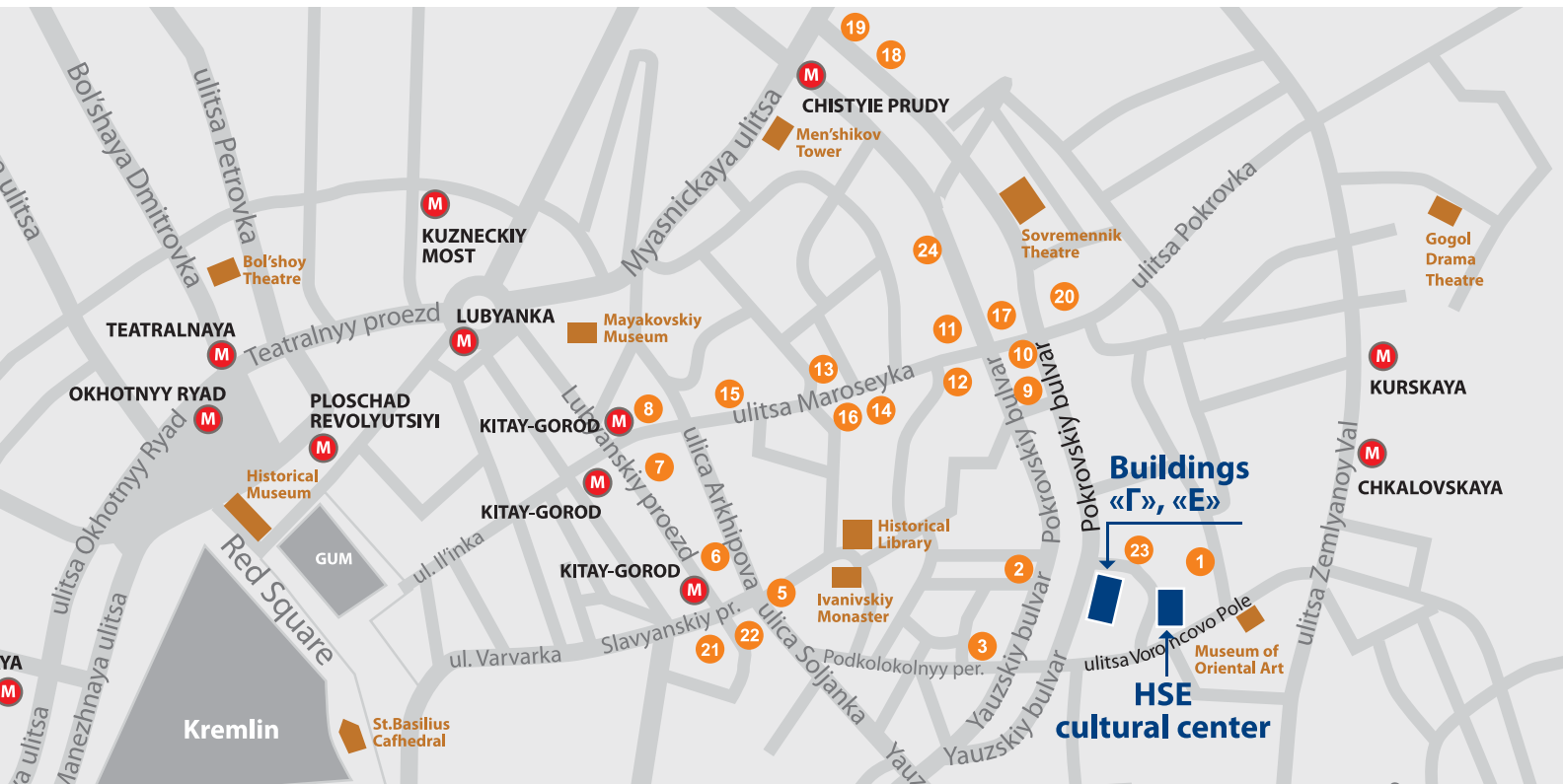


Cultural Centre
Vorontsovo Polye, 5A

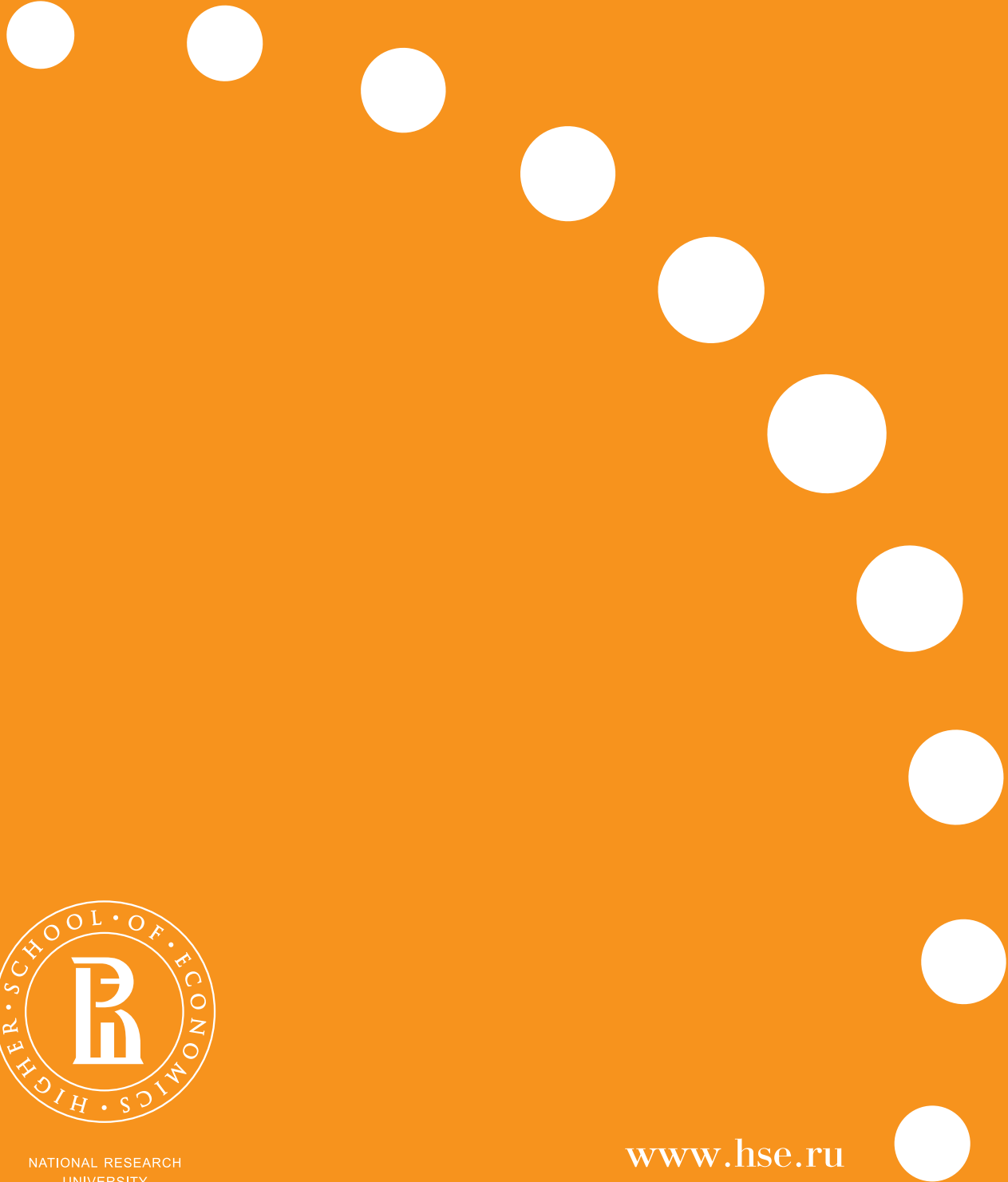
Buildings «Г», «Е»
Pokrovsky Boulevard, 11



Places for lunch



1. Restaurant "Lumier Brothers"
2. Chinese restaurant "Old CAO"
3. Restaurants "Fata Morgana", "Forbes"
4. Cafe "Shokoladnica"
5. Restaurants "Elki-Palki", "Melenka"
6. Cooker's House Club, club "Chinese Pilot Djao da"
7. Restaurant "Hunt"
8. Cafe "Shokoladnica"
9. Club "Crysis of Genre", "Caribe Cafe Club"
10. Cafe "Coffee Bean", restaurant "Kaligula"
11. "Pilsner" pub
12. Restaurant "Hodga in Xiveh"
13. Cafe "Starbucks"
14. Restaurant "Rahat Lukum"
15. Fast-food restaurant "McDonalds"
16. Restaurant "Golden Wobla"
17. Restaurant "Japanese Firewood"
18. Cafe "Bohemia"
19. Fast food restaurant "McDonalds"
20. Bar "Free Bar"
21. Restaurant "Sorry, Babushka"
22. Restaurant "Lyudi kak Lyudi"
23. Restaurant "Hermitage"



NATIONAL RESEARCH
UNIVERSITY

www.hse.ru